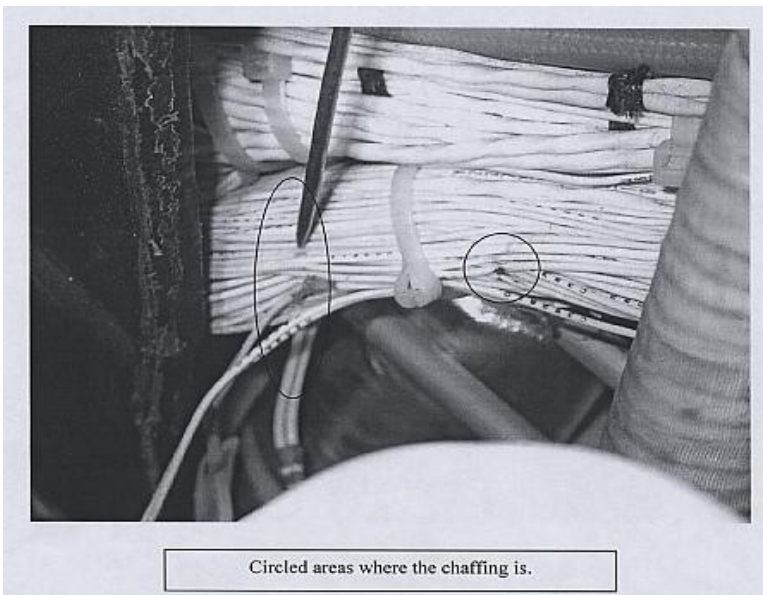
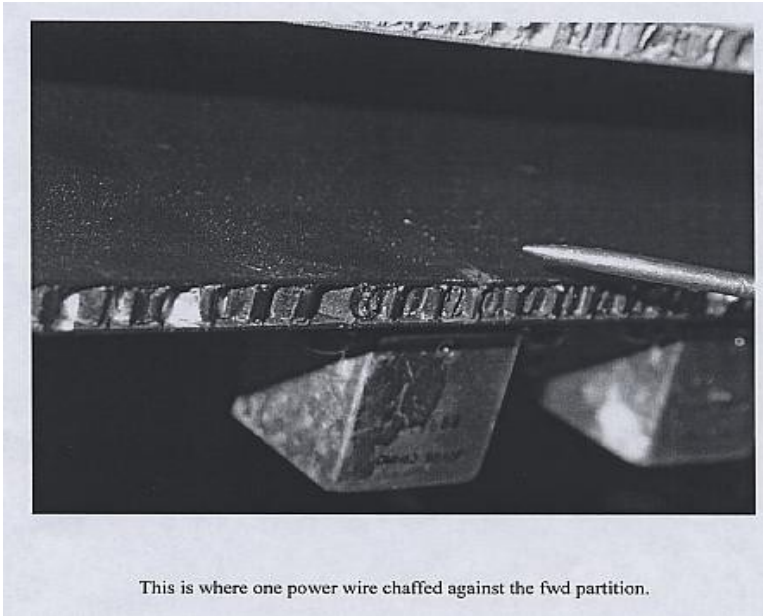


Beechjet 400A, Pitch-Trim Electrical Failure, ATA 2797

A repair station technician says, "The pitch-trim was not working and I removed the right forward galley and the right forward partition. A wire bundle that was chafed was located behind the partition; the mechanic repaired three wires that were chafed through to the conductors.

Clearance between the wire bundle and the partition was established and anti-chafe material was installed.

At the time of the repair no other components had malfunctioned from the other two chafed wires." (Primary wire P/N: C352B20.)



Part Total Time: 3,287.1 hours.